

Electrical Characteristics

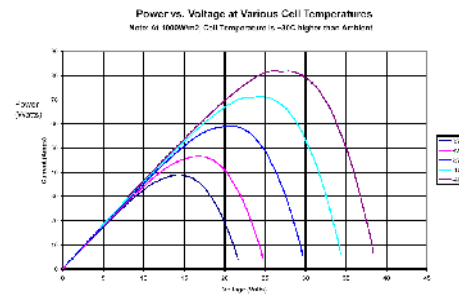
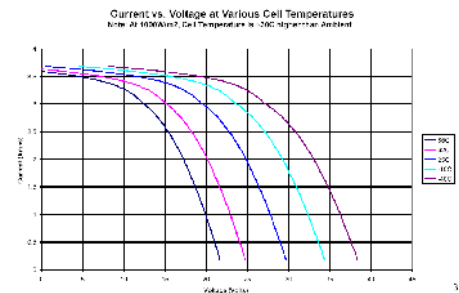
		6 W	15 W	30 W	60 W
Open Circuit Voltage	V_{oc}	23	28.0	27.3	27.3
Maximum Power Voltage	V_{mp}	15.8	18.5	18.1	17.9
Short Circuit Current	I_{sc}	0.45	1.05	2.16	4.32
Maximum Power Current	I_{mp}	0.38	0.81	1.69	3.38

All technical data at Standard Test Conditions (STC): Irradiation 1000W/m²
Spectrum AM1.5, temp 25°C. All electrical specifications are +/- 10%.

System Parameters

	6 W	15 W	30 W	60 W
Max System Voltage	48 V	500 V	500 V	500 V
Cell Type	Crystalline CIGS on SS foil			
Warranty	10 yrs to 80%		10 yrs to 90%, 20 yrs to 80%	

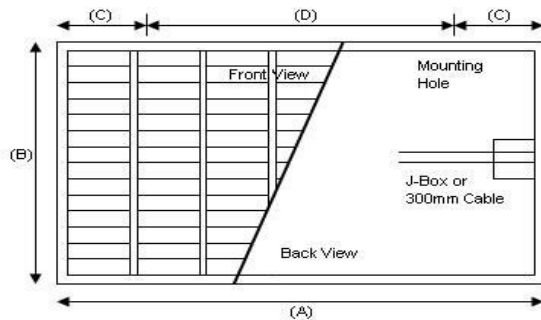
Temperature Characteristics



Power & Voltage Temp Coeff (%)

	6 W	15 W	30 W	60 W
	-0.6 %	-0.6 %	-0.6 %	-0.6 %

Module Characteristics



		6 W	15 W	30 W	60 W
Dimensions [A x B]	mm	445 x 228 x 22	596 x 404 x 22	788 x 602 x 34	1096 x 788 x 34
Mounting Holes [C, D]	mm	148, 300	148, 300	194, 400	248, 600
Weight	kg	1.4	2.7	5.3	9.7
Output Type		Wire	Wire	Wire	J-Box w/ wire