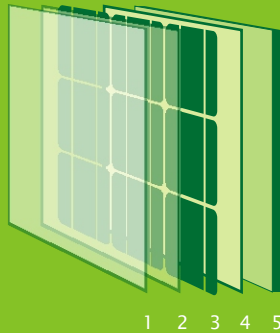
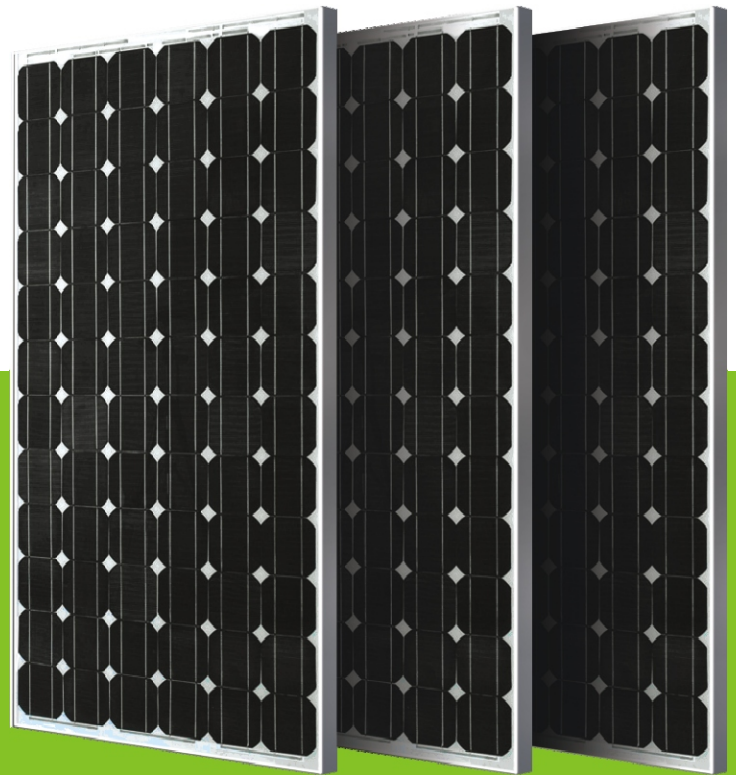




ASTROenergy

A CHINT COMPANY

CHSM 5612M



- 1 Glass
- 2 EVA
- 3 Cell Array
- 4 EVA
- 5 Backsheet

AVAILABLE WATTAGES

170

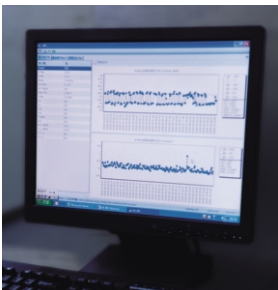
175

180

185

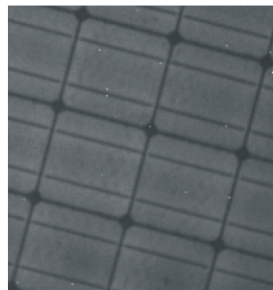
190

Precision Solar Cell Manufacturing



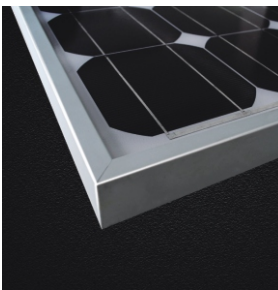
- First PV company in Mainland China to use Manufacturing Execution System (MES) in solar cell production. The products, processes, and equipments are strictly controlled using SPC tools for the highest quality and performance.

State-of-the-Art Solar Module Manufacturing



- Within the same power range and efficiency, cells are further sorted by the short circuit current in order to minimize losses caused by electric-mismatch.
- IV and EL tests are performed before the lamination to ensure the consistency of encapsulated cells and process reliability.
- The EL test is repeated on each module before shipping to ensure product's quality and reliability.

Aesthetic Appeal



- Modules are assembled with high quality, smooth aluminum alloy frames.



CHSM 5612M		Electrical Characteristics				
<h3>Electrical Characteristics</h3>	Pmax(Wp)	170	175	180	185	190
	Isc(A)	5.35	5.42	5.49	5.55	5.61
	Voc(V)	44.24	44.55	44.86	45.17	45.48
	Imp(A)	4.96	5.02	5.09	5.16	5.23
	Vmp(V)	34.30	34.82	35.34	35.86	36.29
	Tolerance(Wp)	±3%				
	Max. System Voltage(V)	DC1000V for SC II and DC600V for USA NEC				
	NOCT	48.6°C				
	Power Temp. Coeff(/°C)	-0.47950%				
	Current Temp. Coeff(/°C)	0.06248%				
	Voltage Temp. Coeff(/°C)	-0.35514%				
	Ambient Temp. (°C)	-40~85				
	Max. Mechanical Load(Kg/m ²)	540				
	Test Condition	Irradiance of 100 mW/cm ² , AM1.5 Spectrum, and a Cell Temperature of 25°C				

Dimension Characteristics			
Length	1580mm / 5.184feet	Width	808mm / 2.651 feet
Height	45mm / 0.148feet	Weight	15.5kg / 34.1lbs
Cell Type		125 × 125(mm) Monocrystalline Silicon	
Cell Matrix	6 × 12	Cell Number	72 pcs
Frame		Aluminum Alloy	

